



US 20140077176A1

(19) **United States**
(12) **Patent Application Publication**
Lee et al.

(10) **Pub. No.: US 2014/0077176 A1**
(43) **Pub. Date: Mar. 20, 2014**

(54) **THIN FILM TRANSISTOR ARRAY
SUBSTRATE AND ORGANIC
LIGHT-EMITTING DIODE DISPLAY**

Publication Classification

(71) Applicant: **SAMSUNG DISPLAY CO., LTD.**,
Yongin-si (KR)

(51) **Int. Cl.**
H01L 27/12 (2006.01)
H01L 51/50 (2006.01)

(72) Inventors: **Won-Se Lee**, Yongin-City (KR);
Won-Kyu Kwak, Yongin-City (KR);
Se-Ho Kim, Yongin-City (KR)

(52) **U.S. Cl.**
CPC *H01L 27/1255* (2013.01); *H01L 51/50*
(2013.01)
USPC *257/40*; *257/71*

(73) Assignee: **SAMSUNG DISPLAY CO., LTD.**,
Yongin-si (KR)

(57) **ABSTRACT**

(21) Appl. No.: **13/801,937**

A thin film transistor (TFT) array substrate includes: a substrate; a first insulation layer on the substrate; a capacitor including a lower electrode on the first insulation layer, and an upper electrode arranged to overlap with the whole lower electrode and having an opening, and the upper electrode is insulated from the lower electrode by a second insulation layer; an inter-layer insulation film covering the capacitor; a node contact hole in the inter-layer insulation film and the second insulation layer, and within the opening; and a connection node on the inter-layer insulation film and electrically coupling the lower electrode and at least one TFT to each other through the node contact hole.

(22) Filed: **Mar. 13, 2013**

(30) **Foreign Application Priority Data**

Sep. 19, 2012 (KR) 10-2012-0104215

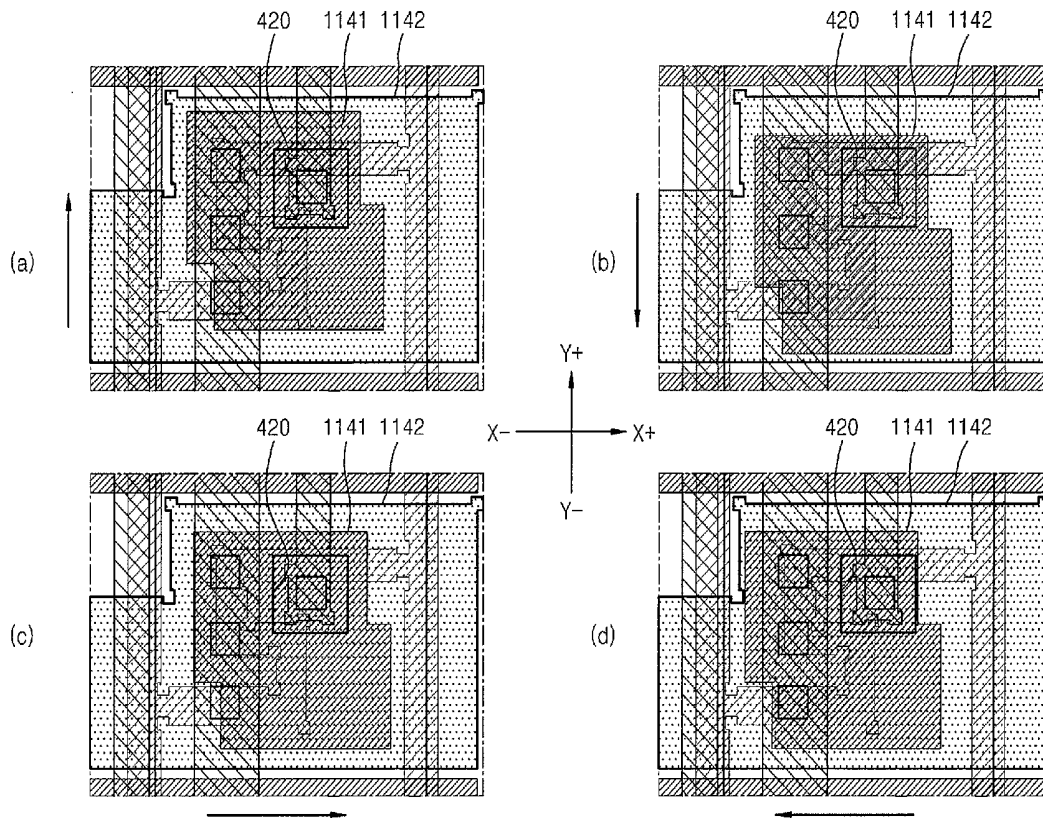


FIG. 1

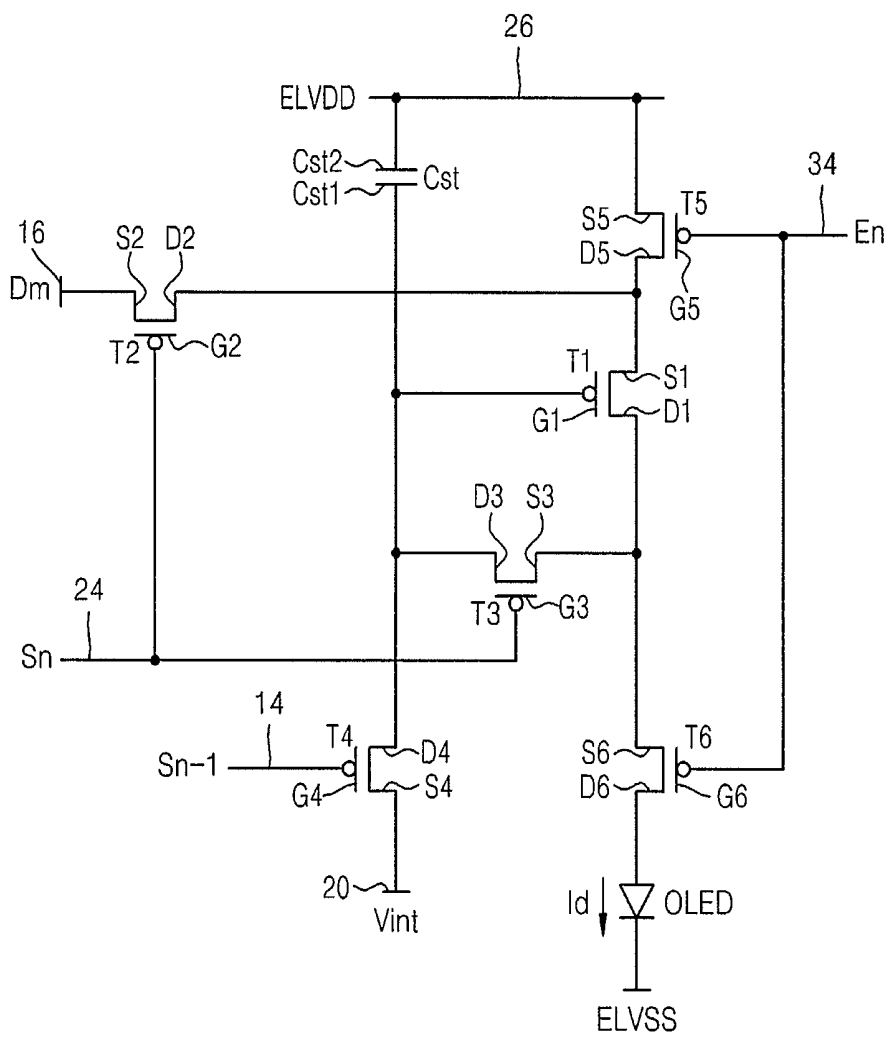


FIG. 2

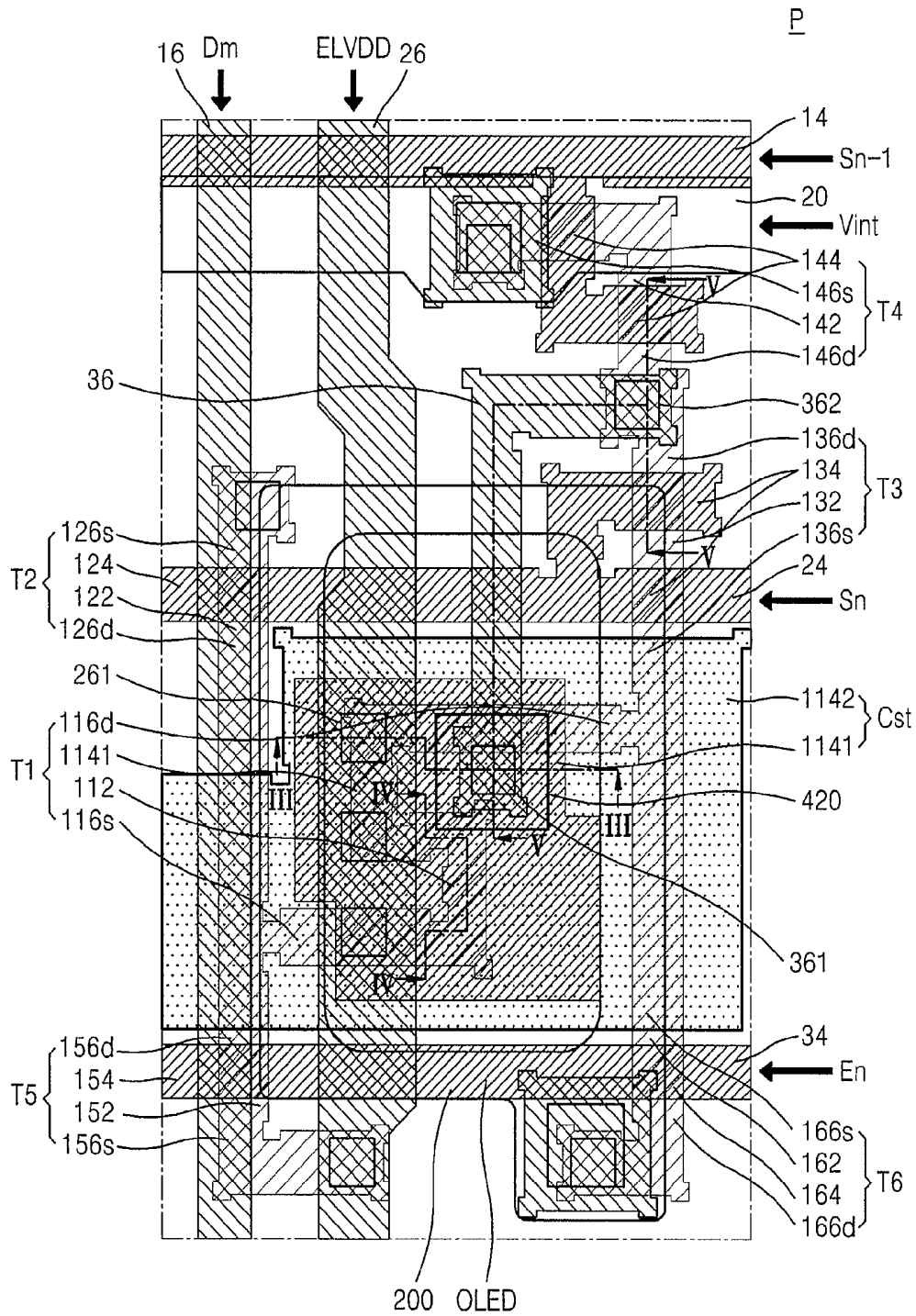


FIG. 3



FIG. 4

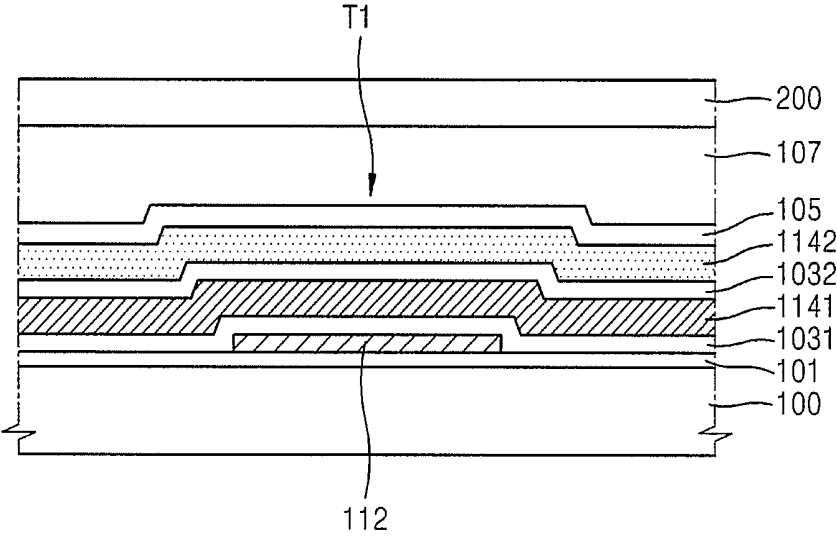


FIG. 5

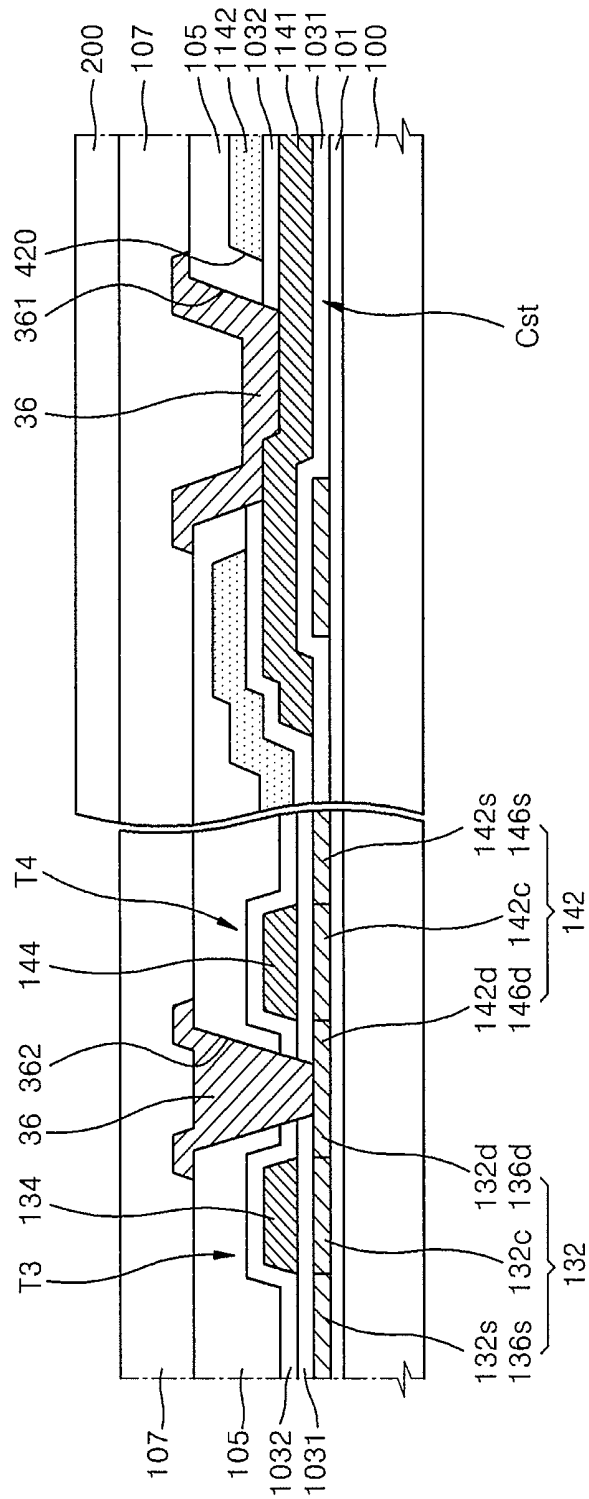
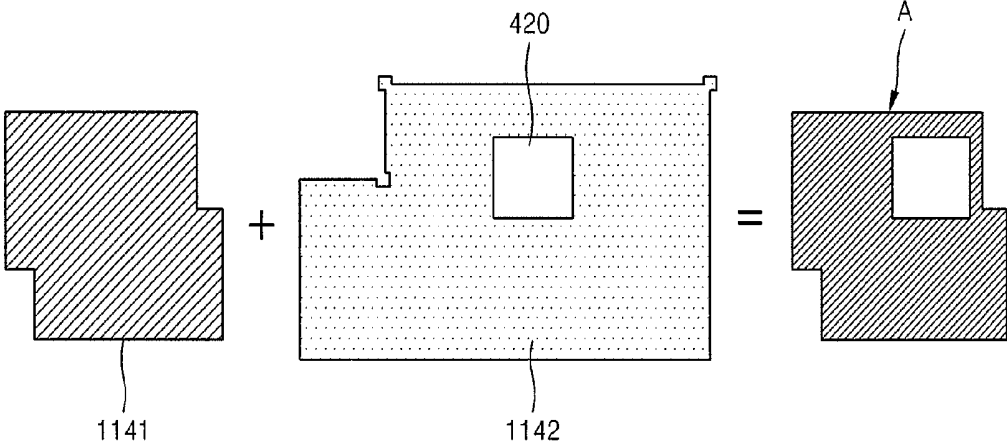


FIG. 6



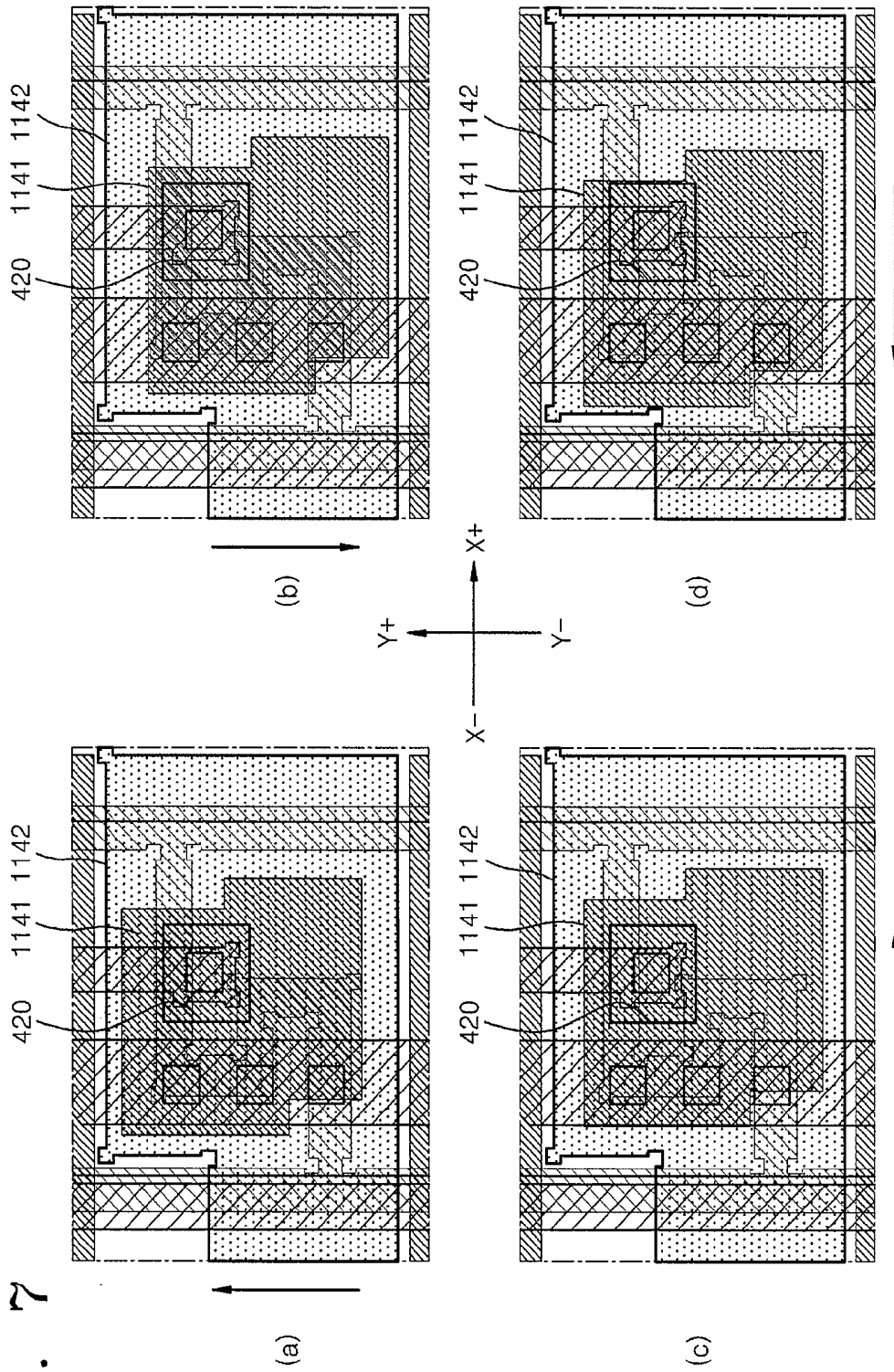


FIG. 7

**THIN FILM TRANSISTOR ARRAY
SUBSTRATE AND ORGANIC
LIGHT-EMITTING DIODE DISPLAY**

CROSS-REFERENCE TO RELATED PATENT
APPLICATION

[0001] This application claims priority to and the benefit of Korean Patent Application No. 10-2012-0104215, filed on Sep. 19, 2012, in the Korean Intellectual Property Office, the disclosure of which is incorporated herein in its entirety by reference.

BACKGROUND

[0002] 1. Field

[0003] Embodiments of the present invention relate to a thin film transistor (TFT) array substrate including at least one TFT and one storage capacitor, and an organic light-emitting diode (OLED) display.

[0004] 2. Description of Related Art

[0005] An organic light-emitting diode (OLED) display may include two electrodes and an organic light-emitting layer interposed therebetween, wherein electrons injected from one electrode and holes injected from the other electrode are combined to form excitons that release energy, thereby emitting light.

[0006] Such an OLED display may also include a plurality of pixels, each pixel including an OLED, which is a self light-emitting device, a plurality of thin film transistors (TFTs), and a capacitor for driving the OLED.

[0007] The capacitor may include lower and upper electrodes and a dielectric interposed therebetween. Each electrode may be patterned through a photolithography process after a conductive layer is formed on the whole surface of a substrate. In a system in which a great number of large-sized panels are manufactured at the same time, a misalignment may occur between a substrate and a mask or a light exposure device within a tolerance (or tolerance level) of process equipment during a patterning process. Contrary to an intention of the design, an overlay deviation may occur between both of the electrodes of the capacitor due to the misalignment. Due to the overlay deviation, a capacitance may be generated that is different from a designed value, thereby resulting in low-gradation spots, abnormal colors, or the like.

SUMMARY

[0008] Aspects of embodiments of the present invention provide a thin film transistor (TFT) array substrate including a storage capacitor structure for maintaining a capacitance to be substantially constant even though an overlay deviation occurs, and an organic light-emitting diode (OLED) display employing the same.

[0009] According to an aspect of the present invention, a TFT array substrate includes: a substrate; a first insulation layer on the substrate; a capacitor including a lower electrode on the first insulation layer, and an upper electrode arranged to overlap with the whole lower electrode and having an opening, and the upper electrode is insulated from the lower electrode by a second insulation layer; an inter-layer insulation film covering the capacitor; a node contact hole in the inter-layer insulation film and the second insulation layer, and within the opening; and a connection node on the inter-layer

insulation film and electrically coupling the lower electrode and at least one TFT to each other through the node contact hole.

[0010] The opening may overlap with the lower electrode.

[0011] The upper electrode may be configured to receive a driving voltage through a driving voltage line formed from the same layer as the connection node.

[0012] The driving voltage line may be coupled to the upper electrode through another contact hole in the inter-layer insulation film.

[0013] The TFT array substrate may further include a driving gate electrode of the driving TFT may include the lower electrode.

[0014] The at least one TFT may include a compensation TFT coupled to the driving TFT and electrically coupled to the lower electrode through the connection node, and the compensation TFT may be configured to compensate for a threshold voltage of the driving TFT.

[0015] A compensation gate electrode of the compensation TFT may be formed from the same layer as the lower electrode.

[0016] The at least one TFT may include an initialization TFT electrically coupled to the lower electrode through the connection node, and the initialization TFT may be configured to provide an initialization voltage to the driving gate electrode of the driving TFT by being turned on in response to a previous scan signal.

[0017] An initialization gate electrode of the initialization TFT may be formed from the same layer as the lower electrode.

[0018] According to another aspect of the present invention, an OLED display includes: a substrate; a first insulation layer on the substrate; a scan line on the first insulation layer and configured to deliver a scan signal; a data line and a driving voltage line crossing the scan line, the data line and the driving voltage line being insulated by a second insulation layer and an inter-layer insulation film and configured to respectively deliver a data signal and a driving voltage; a pixel circuit coupled to the scan line and the data line and including at least one thin film transistor (TFT) and a capacitor; an OLED for emitting light by receiving the driving voltage from the pixel circuit, and the capacitor includes a lower electrode on the first insulation layer, and an upper electrode arranged to overlap with the whole lower electrode and having an opening, and the upper electrode is insulated from the lower electrode by the second insulation layer; a node contact hole in the inter-layer insulation film and the second insulation layer, and within the opening; and a connection node on the inter-layer insulation film and electrically coupling the lower electrode and the at least one TFT to each other through the node contact hole.

[0019] The opening may overlap with the lower electrode.

[0020] The upper electrode may be configured to receive a driving voltage through a driving voltage line formed from the same layer as the connection node.

[0021] The driving voltage line may be coupled to the upper electrode through another contact hole in the inter-layer insulation film.

[0022] The OLED display may further include a driving TFT arranged to overlap with the capacitor. A driving gate electrode of the driving TFT may include the lower electrode.

[0023] The at least one TFT may include a compensation TFT coupled to the driving TFT and electrically coupled to the lower electrode through the connection node, and the

compensation TFT may be configured to compensate for a threshold voltage of the driving TFT.

[0024] A compensation gate electrode of the compensation TFT may be formed from the same layer as the lower electrode.

[0025] The at least one TFT may include an initialization TFT electrically coupled to the lower electrode through the connection node, and the initialization TFT may be configured to provide an initialization voltage to the driving gate electrode of the driving TFT by being turned on in response to a previous scan signal.

[0026] An initialization gate electrode of the initialization TFT may be formed from the same layer as the lower electrode.

[0027] The OLED display may further include a switching TFT for delivering the data signal to the driving TFT by being turned on by the scan signal.

BRIEF DESCRIPTION OF THE DRAWINGS

[0028] The above and other features and aspects of the present invention will become more apparent by describing in detail exemplary embodiments thereof with reference to the attached drawings in which:

[0029] FIG. 1 is an equivalent circuit diagram of one pixel in an organic light-emitting diode (OLED) display according to an embodiment of the present invention;

[0030] FIG. 2 is a top view of the pixel in the OLED display of FIG. 1;

[0031] FIG. 3 is a cross-sectional view through line III-III of FIG. 2;

[0032] FIG. 4 is a cross-sectional view through line IV-IV of FIG. 2;

[0033] FIG. 5 is a cross-sectional view through line V-V of FIG. 2;

[0034] FIG. 6 is a top view schematically showing an overlapping region of a storage capacitor in the pixel of FIG. 2; and

[0035] FIGS. 7A to 7D are top views showing cases where an overlay deviation occurs between both electrodes of the storage capacitor in the pixel of FIG. 2.

DETAILED DESCRIPTION

[0036] Embodiments of the present invention will be described in detail with reference to the attached drawings, so that one of ordinary skill in the art may implement the spirit and scope of the present invention. The present invention can be implemented in various different forms and is not limited to the embodiments described below.

[0037] Parts irrelevant to the description may have been omitted to more clearly describe the present invention, and like reference numerals denote like elements throughout the specification.

[0038] In addition, since the sizes and thicknesses of components in the drawings are arbitrarily shown for convenience of description, the present invention is not necessarily limited to the shown sizes and thicknesses.

[0039] In the drawings, the thicknesses of layers and regions are magnified for clarity. In addition, the thicknesses of some layers and regions are exaggerated for convenience of description. When it is described that a certain component, such as a layer, a film, a region, or a plate, is “above” or “on”

another component, the certain component may be directly above another component, or a third component may be interposed therebetween.

[0040] In the specification, when a certain part “includes” a certain component, this indicates that the part may further include another component instead of excluding another component unless there is no different disclosure. In addition, the term “on” indicates that a certain part is located above or below another part and does not necessarily indicate that the certain part is located above another part based on a direction of gravity.

[0041] As used herein, expressions such as “at least one of,” when preceding a list of elements, modify the entire list of elements and do not modify the individual elements of the list.

[0042] An organic light-emitting diode (OLED) display according to an embodiment will now be described in detail with reference to FIGS. 1 to 5.

[0043] FIG. 1 is an equivalent circuit diagram of one pixel in an OLED display according to an embodiment of the present invention.

[0044] As shown in FIG. 1, the pixel in the OLED display includes a plurality of lines (or signal lines) 14, 24, 34, 16, 26, and 20 and a pixel circuit, which includes a plurality of thin film transistors (TFTs) T1, T2, T3, T4, T5, and T6 that are coupled to the plurality of signal lines 14, 24, 34, 16, 26, and 20 and a storage capacitor Cst. In addition, the pixel further includes an OLED for emitting light by receiving a driving voltage from the pixel circuit.

[0045] The plurality of TFTs T1, T2, T3, T4, T5, and T6 includes a driving TFT T1, a switching TFT T2, a compensation TFT T3, an initialization TFT T4, an operation control TFT T5, and a light-emitting control TFT T6.

[0046] The plurality of lines 14, 24, 34, 16, 26, and 20 includes a scan line 24 for delivering a scan signal Sn, a previous scan line 14 for delivering a previous scan signal Sn-1, a light-emitting control line 34 for delivering a light-emitting control signal En to the operation control TFT T5 and the light-emitting control TFT T6, a data line 16, which crosses the scan line 24 and delivers a data signal Dm, a driving voltage line 26, which delivers a driving voltage ELVDD and is formed to be almost parallel to the data line 16, and an initialization voltage line 20 for delivering an initialization voltage Vint for initializing the driving TFT T1.

[0047] A gate electrode G1 of the driving TFT T1 is coupled to one electrode Cst1 of the storage capacitor Cst, a source electrode S1 thereof is coupled to the driving voltage line 26 via the operation control TFT T5, and a drain electrode D1 thereof is electrically coupled to an anode of the OLED via the light-emitting control TFT T6. In response to a switching operation of the switching TFT T2, the driving TFT T1 receives the data signal Dm and provides a driving current Id to the OLED.

[0048] A gate electrode G2 of the switching TFT T2 is coupled to the scan line 24, a source electrode S2 thereof is coupled to the data line 16, and a drain electrode D2 thereof is coupled to the source electrode S1 of the driving TFT T1 and is also coupled to the driving voltage line 26 via the operation control TFT T5. The switching TFT T2 performs a switching operation for delivering the data signal Dm received through the data line 16 to the source electrode S1 of the driving TFT T1 by being turned on in response to the scan signal Sn received through the scan line 24.

[0049] A gate electrode G3 of the compensation TFT T3 is coupled to the scan line 24, a source electrode S3 thereof is

coupled to the drain electrode D1 of the driving TFT T1 and is also coupled to the anode of the OLED via the light-emitting control TFT T6, and a drain electrode D3 thereof is coupled to the one electrode Cst1 of the storage capacitor Cst, a drain electrode D4 of the initialization TFT T4, and the gate electrode G1 of the driving TFT T1. The compensation TFT T3 couples the gate electrode G1 and the drain electrode D1 of the driving TFT T1 to each other by being turned on in response to the scan signal Sn received through the scan line 24 so that the driving TFT T1 is diode-coupled.

[0050] A gate electrode G4 of the initialization TFT T4 is coupled to the previous scan line 14, a source electrode S4 thereof is coupled to the initialization voltage line 20, and the drain electrode D4 thereof is coupled to the one electrode Cst1 of the storage capacitor Cst, the drain electrode D3 of the compensation TFT T3, and the gate electrode G1 of the driving TFT T1. The initialization TFT T4 delivers the initialization voltage Vint to the gate electrode G1 of the driving TFT T1 by being turned on in response to the previous scan signal Sn-1 received through the previous scan line 14 to perform an initialization operation for initializing a voltage of the gate electrode G1 of the driving TFT T1.

[0051] A gate electrode G5 of the operation control TFT T5 is coupled to the light-emitting control line 34, a source electrode S5 thereof is coupled to the driving voltage line 26, and a drain electrode D5 thereof is coupled to the source electrode S1 of the driving TFT T1 and the drain electrode D2 of the switching TFT T2.

[0052] A gate electrode G6 of the light-emitting control TFT T6 is coupled to light-emitting control line 34, a source electrode S6 thereof is coupled to the drain electrode D1 of the driving TFT T1 and the source electrode S3 of the compensation TFT T3, and a drain electrode D6 thereof is electrically coupled to the anode of the OLED. The operation control TFT T5 and the light-emitting control TFT T6 are concurrently (e.g., simultaneously) turned on in response to the light-emitting control signal En received through the light-emitting control line 34 to deliver the driving voltage ELVDD to the OLED so that the driving current Id flows through the OLED.

[0053] The other electrode Cst 2 of the storage capacitor Cst is coupled to the driving voltage line 26. The one electrode Cst1 of the storage capacitor Cst is coupled to the gate electrode G1 of the driving TFT T1, the drain electrode D3 of the compensation TFT T3, and the drain electrode D4 of the initialization TFT T4 via a connection node.

[0054] A cathode of the OLED is coupled to a common voltage ELVSS. Accordingly, the OLED emits light by receiving the driving current Id from the driving TFT T1 so that an image is displayed.

[0055] An operation of the pixel in the OLED display of FIG. 1 will now be described in detail.

[0056] During an initialization period, the previous scan signal Sn-1 at a low level is provided through the previous scan line 14. In response to the previous scan signal Sn-1 at a low level, the initialization TFT T4 is turned on, thereby providing the initialization voltage Vint to the gate electrode G1 of the driving TFT T1 via the initialization TFT T4 through the initialization voltage line 20. The driving TFT T1 is initialized by the initialization voltage Vint.

[0057] During a data programming period, the scan signal Sn at a low level is supplied through the scan line 24. In response to the scan signal Sn, the switching TFT T2 and the compensation TFT T3 are turned on.

[0058] Due to the turn-on state of the compensation TFT T3, the driving TFT T1 is diode-coupled and biased in a forward direction.

[0059] In this case, a compensation voltage Dm+Vth (Vth has a negative value) obtained by subtracting a threshold voltage Vth of the driving TFT T1 from the data signal Dm input through the data line 16 is applied to the gate electrode G1 of the driving TFT T1.

[0060] Then, the driving voltage ELVDD and the compensation voltage Dm+Vth are applied to both of the electrodes of the storage capacitor Cst, thereby storing charges corresponding to a voltage difference between both of the electrodes of the storage capacitor Cst in the storage capacitor Cst. During a light-emitting period, the light-emitting control signal En provided through the light-emitting control line 34 is changed from a high level to a low level, thereby turning on the operation control TFT T5 and the light-emitting control TFT T6.

[0061] Then, the driving current Id is generated due to a voltage difference between a voltage at the gate electrode G1 of the driving TFT T1 and the driving voltage ELVDD and is supplied to the OLED through the light-emitting control TFT T6. During the light-emitting period, a gate-source voltage Vgs of the driving TFT T1 is maintained as '(Dm+Vth)-ELVDD' by the storage capacitor Cst, and according to a current-voltage relationship of the driving TFT T1, the driving current Id is determined regardless of the threshold voltage Vth of the driving TFT T1.

[0062] A structure of the pixel in the OLED display of FIG. 1 will now be described in detail with reference to FIGS. 2 to 5, which are based on FIG. 1. FIG. 2 is a top view of a pixel P in the OLED display of FIG. 1. FIG. 3 is a cross-sectional view through the line III-III of FIG. 2. FIG. 4 is a cross-sectional view through the line IV-IV of FIG. 2. FIG. 5 is a cross-sectional view through the line V-V of FIG. 2.

[0063] As shown in FIGS. 2 to 5, according to an embodiment, the pixel P in the OLED display includes the scan line 24, the previous scan line 14, the light-emitting control line 34, and the initialization voltage line 20, which apply the scan signal Sn, the previous scan signal Sn-1, the light-emitting control signal En, and the initialization voltage Vint, respectively, along a row direction, and includes the data line 16 and the driving voltage line 26, which cross each of the scan line 24, the previous scan line 14, the light-emitting control line 34, and the initialization voltage line 20, and apply the data signal Dm and the driving voltage ELVDD, respectively.

[0064] In addition, the pixel P includes the driving TFT T1, the switching TFT T2, the compensation TFT T3, the initialization TFT T4, the operation control TFT T5, the light-emitting control TFT T6, the storage capacitor Cst, and the OLED.

[0065] The driving TFT T1, the switching TFT T2, the compensation TFT T3, the initialization TFT T4, the operation control TFT T5, and the light-emitting control TFT T6 are formed along semiconductor layers 112, 122, 132, 142, 152, and 162, which are formed bent in various shapes, respectively. Each of the semiconductor layers 112, 122, 132, 142, 152, and 162 is formed of polysilicon. Each of the semiconductor layers 112, 122, 132, 142, 152, and 162 includes a channel region not doped with impurities, and a source region and a drain region, doped with impurities, formed at both sides of the channel region. The impurities vary according to types of the TFTs and may include N-type impurities and/or P-type impurities.

[0066] The semiconductor layers 112, 122, 132, 142, 152, and 162 include a driving semiconductor layer 112 formed in the driving TFT T1, a switching semiconductor layer 122 formed in the switching TFT T2, a compensation semiconductor layer 132 formed in the compensation TFT T3, an initialization semiconductor layer 142 formed in the initialization TFT T4, an operation control semiconductor layer 152 formed in the operation control TFT T5, and a light-emitting control semiconductor layer 162 formed in the light-emitting control TFT T6.

[0067] The driving TFT T1 includes the driving semiconductor layer 112, a driving gate electrode 1141, a driving source electrode 116s, and a driving drain electrode 116d. The driving semiconductor layer 112 is bent. The driving source electrode 116s corresponds to a driving source region 116s doped with impurities in the driving semiconductor layer 112, and the driving drain electrode 116d corresponds to a driving drain region 116d doped with impurities in the driving semiconductor layer 112. The storage capacitor Cst is formed on the driving TFT T1 to overlap with the driving TFT T1.

[0068] The storage capacitor Cst includes lower and upper electrodes 1141 and 1142 with a second gate insulation film 1032 interposed therebetween. The driving gate electrode 1141 also functions as the lower electrode 1141. That is, the driving gate electrode 1141 includes the lower electrode 1141. The second gate insulation film 1032 is formed of a dielectric, and a storage capacitance is determined by charges accumulated in the storage capacitor Cst and a voltage between the lower and upper electrodes 1141 and 1142.

[0069] According to an embodiment, the lower electrode 1141 is formed as a floating electrode having an island shape and is formed of the same material layers as the scan line 24, the previous scan line 14, the light-emitting control line 34, a switching gate electrode 124, a compensation gate electrode 134, an initialization gate electrode 144, an operation control gate electrode 154, and a light-emitting control gate electrode 164.

[0070] The upper electrode 1142 may be formed on the second gate insulation film 1032 as a floating electrode having an island shape. In one embodiment, the upper electrode 1142 is arranged to overlap with the whole lower electrode 1141 and has a storage opening 420. The storage opening 420 may have a shape of a simple closed curve penetrating the upper electrode 1142. According to one embodiment, the simple closed curve refers to a closed figure in which a start point and an end point are the same when the closed curve is traced from the start point of the traced curve to draw a polygon, a circle, or the like. The upper electrode 1142 having the storage opening 420 may have a doughnut shape.

[0071] According to an embodiment of the present invention, by using the storage capacitor Cst including the upper electrode 1142, which overlaps with the whole lower electrode 1141 and has the storage opening 420 having a simple closed curve, even though an overlay deviation occurs between the lower electrode 1141 and the upper electrode 1142 during a method of manufacturing the OLED display, the capacitance of the storage capacitor Cst may be maintained (e.g., always be maintained) to be substantially constant. This feature will be described in detail below with reference to FIGS. 6 and 7.

[0072] The switching TFT T2 includes the switching semiconductor layer 122, the switching gate electrode 124, a switching source electrode 126s, and a switching drain elec-

trode 126d. The switching source electrode 126s protrudes from the data line 16, and the switching drain electrode 126d corresponds to a switching drain region 126d doped with impurities in the switching semiconductor layer 122.

[0073] The compensation TFT T3 includes the compensation semiconductor layer 132, the compensation gate electrode 134, a compensation source electrode 136s, and a compensation drain electrode 136d, wherein the compensation source electrode 136s corresponds to a compensation source region 136s doped with impurities in the compensation semiconductor layer 132, and the compensation drain electrode 136d corresponds to a compensation drain region 136d doped with impurities in the compensation semiconductor layer 132. The compensation drain electrode 136d may be coupled to the lower electrode 1141 via a connection node 36. In one embodiment, the compensation gate electrode 134 prevents a leakage current by forming a separate dual gate electrode.

[0074] The initialization TFT T4 includes the initialization semiconductor layer 142, the initialization gate electrode 144, an initialization source electrode 146s, and an initialization drain electrode 146d. The initialization drain electrode 146d corresponds to an initialization drain region 146d doped with impurities in the initialization semiconductor layer 142. The initialization drain electrode 146d may be coupled to the lower electrode 1141 via the connection node 36. The initialization source electrode 146s may be coupled to the initialization voltage line 20 via a connection member.

[0075] The operation control TFT T5 includes the operation control semiconductor layer 152, the operation control gate electrode 154, an operation control source electrode 156s, and an operation control drain electrode 156d. The operation control source electrode 156s is a portion of the driving voltage line 26, and the operation control drain electrode 156d corresponds to an operation control drain region 156d doped with impurities in the operation control semiconductor layer 152.

[0076] The light-emitting control TFT T6 includes the light-emitting control semiconductor layer 162, the light-emitting control gate electrode 164, a light-emitting control source electrode 166s, and a light-emitting control drain electrode 166d. The light-emitting control source electrode 166s corresponds to a light-emitting control source region 166s doped with impurities in the light-emitting control semiconductor layer 162, and the light-emitting control drain electrode 166d may be coupled to a pixel electrode 200 via a connection member.

[0077] According to one embodiment, one end of the driving semiconductor layer 112 of the driving TFT T1 is coupled to the switching semiconductor layer 122 and the operation control semiconductor layer 152, and the other end thereof is coupled to the compensation semiconductor layer 132 and the light-emitting control semiconductor layer 162. Thus, the driving source electrode 116s is coupled to the switching drain electrode 126d and the operation control drain electrode 156d, and the driving drain electrode 116d is coupled to the compensation source electrode 136s and the light-emitting control source electrode 166s.

[0078] The lower electrode 1141 of the storage capacitor Cst may be coupled to the compensation TFT T3 and the initialization TFT T4 via the connection node 36. The connection node 36 may be formed in the same layer as the data line 16. One end of the connection node 36 may be coupled to the lower electrode 1141 via a first node contact hole 361 formed in the second gate insulation film 1032 and an inter-

layer insulation film 105. The first node contact hole 361 may be formed within the storage opening 420 of the upper electrode 1142. The other end of the connection node 36 may be coupled to the compensation drain electrode 136d and the initialization drain electrode 146d via a second node contact hole 362 formed in a first gate insulation film 1031, the second gate insulation film 1032, and the inter-layer insulation film 105.

[0079] The upper electrode 1142 of the storage capacitor Cst may be used as a switching device for selecting a pixel from which light is emitted. In one embodiment, the switching gate electrode 124 is coupled to the scan line 24, the switching source electrode 126s is coupled to the data line 16, and the switching drain electrode 126d is coupled to the driving TFT T1 and the operation control TFT T5.

[0080] The light-emitting control drain electrode 166d of the light-emitting control TFT T6 is directly coupled to the pixel electrode 200 of the OLED via a via hole (not shown) formed on a protection film 107.

[0081] A structure of an OLED display according to an embodiment of the present invention will now be described in detail in a layered order with reference to FIGS. 3 to 5. For convenience of description, FIGS. 3 to 5 show only layers from a substrate 100 to the pixel electrode 200. In FIGS. 3 to 5, a structure of the driving TFT T1, the compensation TFT T3, and the initialization TFT T4 is mainly described. The storage capacitor Cst is described together with them. Since the other TFTs T2, T5, and T6 substantially have a similar (or the same) structure as the driving TFT T1, the compensation TFT T3, and the initialization TFT T4, a detailed description thereof is omitted.

[0082] In one embodiment, a buffer layer 101 is formed on the substrate 100, which may be an insulation substrate formed of glass, quartz, ceramic, plastic, or the like.

[0083] The driving semiconductor layer 112, the compensation semiconductor layer 132, and the initialization semiconductor layer 142 are formed on the buffer layer 101. Although not shown, the driving semiconductor layer 112 may include a driving channel region, and a driving source region and a driving drain region facing each other with the driving channel region therebetween. The compensation semiconductor layer 132 also includes a compensation channel region 132c, and the compensation source region 136s and the compensation drain region 136d facing each other with the compensation channel region 132c therebetween. The initialization semiconductor layer 142 also includes an initialization channel region 142c, and an initialization source region 146s and the initialization drain region 146d facing each other with the initialization channel region 142c therebetween.

[0084] The first gate insulation film 1031 is formed on the driving semiconductor layer 112, the compensation semiconductor layer 132, and the initialization semiconductor layer 142. The first gate insulation film 1031 may be formed of silicon nitride (SiN_x), silicon oxide (SiO_2), or the like.

[0085] A first gate conductive layer, parts of which form the driving gate electrode 1141 including the lower electrode 1141 of the storage capacitor Cst, the scan line 24 including the compensation gate electrode 134, the previous scan line 14 including the initialization gate electrode 144, and the light-emitting control line 34 including the operation control gate electrode 154 and the light-emitting control gate electrode 164, is formed on the first gate insulation film 1031.

[0086] In one embodiment, the driving gate electrode 1141 or the lower electrode 1141 are separated from the previous scan line 14, the scan line 24, and the light-emitting control line 34 and overlap with the driving channel region of the driving semiconductor layer 112. The compensation gate electrode 134 is coupled to the scan line 24 and overlaps with the compensation channel region 132c of the compensation semiconductor layer 132. The initialization gate electrode 144 is coupled to the previous scan line 14 and overlaps with the initialization channel region 142c of the initialization semiconductor layer 142.

[0087] The second gate insulation film 1032 covers the first gate conductive layer and the first gate insulation film 1031. The second gate insulation film 1032 may be formed of SiN_x , SiO_2 , or the like.

[0088] A second gate conductive layer 1142 including the upper electrode 1142 of the storage capacitor Cst is formed on the second gate insulation film 1032. The upper electrode 1142, which operates as a floating electrode, overlaps with the whole lower electrode 1141 to form the storage capacitor Cst and has the storage opening 420 overlapping with the lower electrode 1141. The storage opening 420 may have a shape of a simple closed curve penetrating the upper electrode 1142.

[0089] The inter-layer insulation film 105 is formed on the second gate insulation film 1032 and the upper electrode 1142. Like the first gate insulation film 1031 and the second gate insulation film 1032, the inter-layer insulation film 105 is formed of a ceramic series material, such as SiN_x , SiO_2 , or the like.

[0090] The first node contact hole 361 is formed in the second gate insulation film 1032 and the inter-layer insulation film 105, within the storage opening 420 of the upper electrode 1142 to expose the lower electrode 1141 to the outside. In addition, the second node contact hole 362 is formed in the first gate insulation film 1031, the second gate insulation film 1032, and the inter-layer insulation film 105 to expose the compensation drain region 136d of the compensation semiconductor layer 132 and the initialization drain region 146d of the initialization semiconductor layer 142.

[0091] The driving voltage line 26, the connection node 36, and the data line 16 are formed on the inter-layer insulation film 105. The driving voltage line 26 is coupled to the upper electrode 1142 of the storage capacitor Cst through a driving voltage line contact hole 261 so that the upper electrode 1142 receives the driving voltage ELVDD through the driving voltage line 26. One end of the connection node 36 is coupled to the lower electrode 1141 of the storage capacitor Cst via the first node contact hole 361, and the other end of the connection node 36 is coupled to the compensation drain electrode 136d of the compensation TFT T3 and the initialization drain electrode 146d of the initialization TFT T4 via the second node contact hole 362. As described above, the compensation drain electrode 136d and the initialization drain electrode 146d correspond to the compensation drain region 136d and the initialization drain region 146d, respectively.

[0092] The protection film 107 covering the data line 16, the driving voltage line 26, and the connection node 36 is formed on the inter-layer insulation film 105, and the pixel electrode 200 is formed on the protection film 107.

[0093] Although not shown, the pixel electrode 200 may be coupled to the light-emitting control drain electrode 166d through a via hole formed in the protection film 107. A pixel-defining film (not shown) may be formed on the edge of the pixel electrode 200 and the protection film 107 and may have

a pixel opening (not shown) to expose the pixel electrode **200**. The pixel-defining film may be formed of an organic material, such as a polyacrylate resin or polyimides, or a silica series inorganic material. An organic light-emitting layer (not shown) may be formed on the pixel electrode **200** exposed through the pixel opening, and a common electrode (not shown) may be formed on the organic light-emitting layer. As such, an OLED, including the pixel electrode **200**, the organic light-emitting layer, and the common electrode, may be formed.

[0094] In one embodiment, the pixel electrode **200** is an anode that is a hole injection electrode, and the common electrode is a cathode that is an electron injection electrode. However, the present invention is not necessarily limited thereto, and according to a driving method of the OLED display, the pixel electrode **200** may be cathode, and the common electrode may be an anode. Light is emitted when holes and electrons are injected from the pixel electrode **200** and the common electrode, respectively, and excitons generated by combining the injected holes and electrons to transition from an excited state to a ground state.

[0095] The organic light-emitting layer may be formed of a low-molecular weight organic material or a high-molecular weight organic material, such as Poly 3,4-ethylenedioxythiophene (PEDOT). In addition, the organic light-emitting layer may be formed of a multi-film structure including at least one of a hole injection layer (HIL), a hole transporting layer (HTL), an electron transporting layer (ETL), and an electron injection layer (EIL). In one embodiment, when the multi-film structure includes all of the HIL, the HTL, the ETL, and the EIL, the HIL is arranged on the pixel electrode **200** that is the anode, and then the HTL, the ETL, and the EIL are sequentially layered on the HIL. When the common electrode is formed of a reflection-type conductive material, the OLED display may be a rear-surface light-emitting type display. Examples of the reflection-type conductive material include lithium (Li), calcium (Ca), lithium fluoride/calcium (LiF/Ca), lithium fluoride/aluminum (LiF/Al), Al, silver (Ag), magnesium (Mg), and gold (Au).

[0096] FIG. 6 is a top view schematically showing an overlapping region of the storage capacitor Cst in the OLED display of FIG. 2. FIGS. 7A to 7D are top views showing cases where an overlay deviation occurs between the lower and upper electrodes **1141** and **1142** of the storage capacitor Cst in the OLED display of FIG. 2.

[0097] Referring to FIGS. 6 to 7D, the OLED display is characterized in that a capacitance of the storage capacitor Cst may be maintained (e.g., always maintained) to be substantially constant even though an overlay deviation occurs between the lower and upper electrodes **1141** and **1142** during a manufacturing process of the OLED display. The storage capacitor Cst includes the upper electrode **1142**, which overlaps with the whole lower electrode **1141** and has the storage opening **420** in a simple closed curve shape.

[0098] When the two or more layers overlapping each other are formed, if each of the two or more layers overlapping each other is shifted to the top, bottom, left, or right, an overlapping region due to the shift differs from an initially designed overlapping region, and this overlapping region difference is the overlay deviation. The overlay deviation may occur due to a misalignment between a substrate and a mask or a light exposure device when a conductive layer is formed on the whole substrate and is patterned by a photolithography process. This overlay deviation may have a high probability of occurring

within a tolerance (or tolerance level) of process equipment in a system for concurrently (e.g., simultaneously) producing a great number of large panels.

[0099] Referring to FIG. 6, a capacitance between the lower and upper electrodes **1141** and **1142** of the storage capacitor Cst is determined by Equation 1. In Equation 1, C denotes a capacitance, E denotes a dielectric constant, A denotes an area of an overlapping region of the lower and upper electrodes **1141** and **1142**, and d denotes a distance between the lower and upper electrodes **1141** and **1142**.

$$C = \epsilon \frac{A}{d} \quad (1)$$

[0100] That is, the capacitance of the storage capacitor Cst may be determined by a dielectric constant ϵ of the second gate insulation layer **1032**, the distance d between the lower and upper electrodes **1141** and **1142**, and the area A of the overlapping region of the lower and upper electrodes **1141** and **1142**. Thus, when the area A of the overlapping region of the lower and upper electrodes **1141** and **1142** varies, the capacitance also varies. In other words, when an overlay deviation between the lower and upper electrodes **1141** and **1142** occurs, the capacitance may be different from a designed value. If the capacitance is different from the designed value, problems, such as low-gradation spots and abnormal colors, may occur, thereby degrading the quality of the OLED display.

[0101] To address these problems, an OLED display according to embodiments of the present invention is characterized in that the capacitance of the storage capacitor Cst may be maintained (e.g., always maintained) to be substantially constant even though an overlay deviation occurs between the lower and upper electrodes **1141** and **1142**. In one embodiment, the storage capacitor Cst includes the upper electrode **1142** having the storage opening **420** in a simple closed curve shape.

[0102] For example, FIG. 7A shows a case where the lower electrode **1141** is shifted to the top (in a +Y direction) rather than a designed location. FIG. 7B shows a case where the lower electrode **1141** is shifted to the bottom (in a -Y direction) rather than the designed location, FIG. 7C shows a case where the lower electrode **1141** is shifted to the right (in a +X direction) rather than the designed location, and FIG. 7D shows a case where the lower electrode **1141** is shifted to the left (in a -X direction) rather than the designed location.

[0103] A shift (or shift level) may be generated within a tolerance (or tolerance level) of process equipment, and the tolerance may be at most within a range in which the opening **420** of the upper electrode **1142** overlaps with the lower electrode **1141**. When a shift occurs to a region in which the opening **420** of the upper electrode **1142** does not overlap with the lower electrode **1141**, a problem may occur in forming the connection node **36** and the first node contact hole **361**, thereby making the pixel circuit inoperable. Thus, aspects of embodiments of the present invention do not deal with the case that the tolerance (or tolerance level) exceeds the range in which the opening **420** of the upper electrode **1142** overlaps with the lower electrode **1141**. So that the whole lower electrode **1141** and the upper electrode **1142** overlap each other, an area of the upper electrode **1142** may be equal to or greater than that of the lower electrode **1141**. For example, the area of the upper electrode **1142** may be as large

as that of the lower electrode **1141** so that the capacitance may be maintained (e.g., always maintained) to be substantially constant even though a shift occurs.

[0104] According to each case of FIGS. 7A to 7D, even though the lower electrode **1141** is shifted to the top, bottom, left, and right from the designed location, the upper electrode **1142** overlaps (or always overlaps) with the whole lower electrode **1141**, and the opening **420** of the upper electrode **1142** overlaps (or always overlaps) with the lower electrode **1141**, and thus, the capacitance may be maintained to be substantially constant.

[0105] Although the lower electrode **1141** is shifted in FIGS. 7A to 7D, the present invention is not limited thereto, and the capacitance may be maintained to be substantially constant even though the upper electrode **1142** is shifted.

[0106] According to an embodiment of the present invention, the whole lower electrode and an upper electrode of a storage capacitor overlap each other, and an opening is formed in the upper electrode to overlap with the lower electrode, and thus even though an overlay deviation occurs between the two electrodes, a capacitance may be maintained (e.g., always maintained) to be substantially constant. Accordingly, low-gradation spots and abnormal colors due to a capacitance change may be prevented.

[0107] While the present invention has been particularly shown and described with reference to exemplary embodiments thereof, it will be understood by one of ordinary skill in the art that various changes in form and details may be made therein without departing from the spirit and scope of the present invention as defined by the following claims and their equivalents.

What is claimed is:

1. A thin film transistor (TFT) array substrate comprising:
 - a substrate;
 - a first insulation layer on the substrate;
 - a capacitor comprising a lower electrode on the first insulation layer, and an upper electrode arranged to overlap with the whole lower electrode and having an opening, wherein the upper electrode is insulated from the lower electrode by a second insulation layer;
 - an inter-layer insulation film covering the capacitor;
 - a node contact hole in the inter-layer insulation film and the second insulation layer, and within the opening; and
 - a connection node on the inter-layer insulation film and electrically coupling the lower electrode and at least one TFT to each other through the node contact hole.
2. The TFT array substrate of claim 1, wherein the opening overlaps with the lower electrode.
3. The TFT array substrate of claim 1, wherein the upper electrode is configured to receive a driving voltage through a driving voltage line formed from the same layer as the connection node.
4. The TFT array substrate of claim 3, wherein the driving voltage line is coupled to the upper electrode through another contact hole in the inter-layer insulation film.
5. The TFT array substrate of claim 1, further comprising a driving TFT arranged to overlap with the capacitor,
 - wherein a driving gate electrode of the driving TFT comprises the lower electrode.
6. The TFT array substrate of claim 5, wherein the at least one TFT comprises a compensation TFT coupled to the driving TFT and electrically coupled to the lower electrode

through the connection node, and wherein the compensation TFT is configured to compensate for a threshold voltage of the driving TFT.

7. The TFT array substrate of claim 6, wherein a compensation gate electrode of the compensation TFT is formed from the same layer as the lower electrode.

8. The TFT array substrate of claim 5, wherein the at least one TFT comprises an initialization TFT electrically coupled to the lower electrode through the connection node, and wherein the initialization TFT is configured to provide an initialization voltage to the driving gate electrode of the driving TFT by being turned on in response to a previous scan signal.

9. The TFT array substrate of claim 8, wherein an initialization gate electrode of the initialization TFT is formed from the same layer as the lower electrode.

10. An organic light-emitting diode (OLED) display comprising:

- a substrate;
 - a first insulation layer on the substrate;
 - a scan line on the first insulation layer and configured to deliver a scan signal;
 - a data line and a driving voltage line crossing the scan line, the data line and the driving voltage line being insulated by a second insulation layer and an inter-layer insulation film and configured to respectively deliver a data signal and a driving voltage;
 - a pixel circuit coupled to the scan line and the data line and comprising at least one thin film transistor (TFT) and a capacitor;
 - an OLED for emitting light by receiving the driving voltage from the pixel circuit,
- wherein the capacitor comprises a lower electrode on the first insulation layer, and an upper electrode arranged to overlap with the whole lower electrode and having an opening, wherein the upper electrode is insulated from the lower electrode by the second insulation layer;
- a node contact hole in the inter-layer insulation film and the second insulation layer, and within the opening; and
 - a connection node on the inter-layer insulation film and electrically coupling the lower electrode and the at least one TFT to each other through the node contact hole.

11. The OLED display of claim 10, wherein the opening overlaps with the lower electrode.

12. The OLED display of claim 10, wherein the upper electrode is configured to receive a driving voltage through a driving voltage line formed from the same layer as the connection node.

13. The OLED display of claim 12, wherein the driving voltage line is coupled to the upper electrode through another contact hole in the inter-layer insulation film.

14. The OLED display of claim 10, further comprising a driving TFT arranged to overlap with the capacitor,

- wherein a driving gate electrode of the driving TFT comprises the lower electrode.

15. The OLED display of claim 14, wherein the at least one TFT comprises a compensation TFT coupled to the driving TFT and electrically coupled to the lower electrode through the connection node, and wherein the compensation TFT is configured to compensate for a threshold voltage of the driving TFT.

16. The OLED display of claim 15, wherein a compensation gate electrode of the compensation TFT is formed from the same layer as the lower electrode.

17. The OLED display of claim **14**, wherein the at least one TFT comprises an initialization TFT electrically coupled to the lower electrode through the connection node, and wherein the initialization TFT is configured to provide an initialization voltage to the driving gate electrode of the driving TFT by being turned on in response to a previous scan signal.

18. The OLED display of claim **17**, wherein an initialization gate electrode of the initialization TFT is formed from the same layer as the lower electrode.

19. The OLED display of claim **14**, further comprising a switching TFT for delivering the data signal to the driving TFT by being turned on by the scan signal.

* * * * *

专利名称(译)	薄膜晶体管阵列基板和有机发光二极管显示器		
公开(公告)号	US20140077176A1	公开(公告)日	2014-03-20
申请号	US13/801937	申请日	2013-03-13
[标]申请(专利权)人(译)	三星显示有限公司		
申请(专利权)人(译)	三星DISPLAY CO. , LTD.		
当前申请(专利权)人(译)	三星DISPLAY CO. , LTD.		
[标]发明人	LEE WON SE KWAK WON KYU KIM SE HO		
发明人	LEE, WON-SE KWAK, WON-KYU KIM, SE-HO		
IPC分类号	H01L27/12 H01L51/50		
CPC分类号	H01L51/50 H01L27/1255 H01L27/3262 H01L27/3265 H01L27/3276 H01L28/40 H01L21/02107		
优先权	1020120104215 2012-09-19 KR		
其他公开文献	US9299730		
外部链接	Espacenet USPTO		

摘要(译)

一种薄膜晶体管 (TFT) 阵列基板, 包括: 基板; 基板上的第一绝缘层; 电容器, 包括在第一绝缘层上的下电极, 和设置为与整个下电极重叠并具有开口的上电极, 上电极通过第二绝缘层与下电极绝缘; 覆盖电容器的层间绝缘膜; 层间绝缘膜和第二绝缘层中的节点接触孔, 并且在开口内; 层间绝缘膜上的连接节点, 通过节点接触孔将下电极和至少一个TFT电连接。

